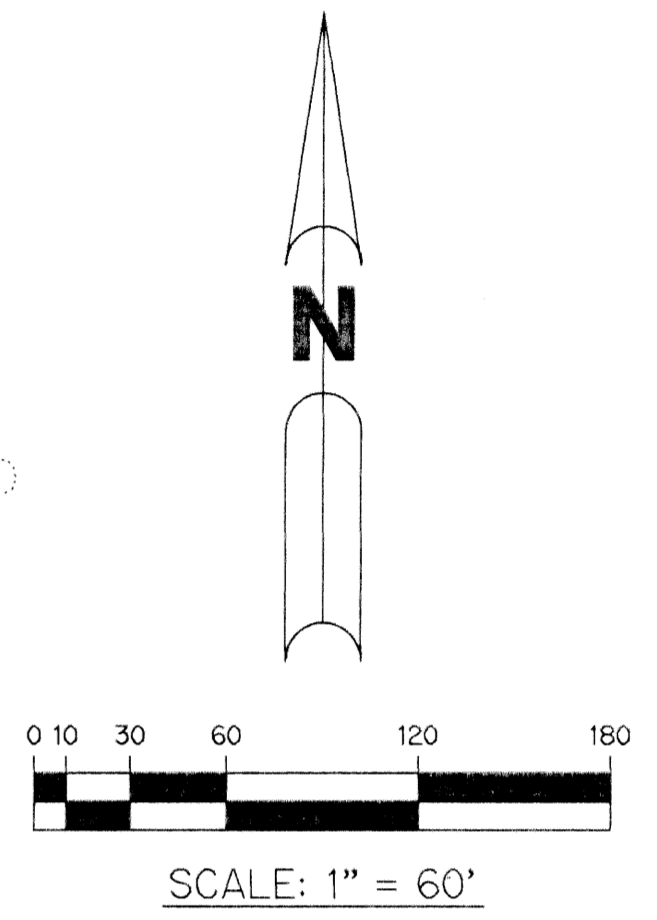
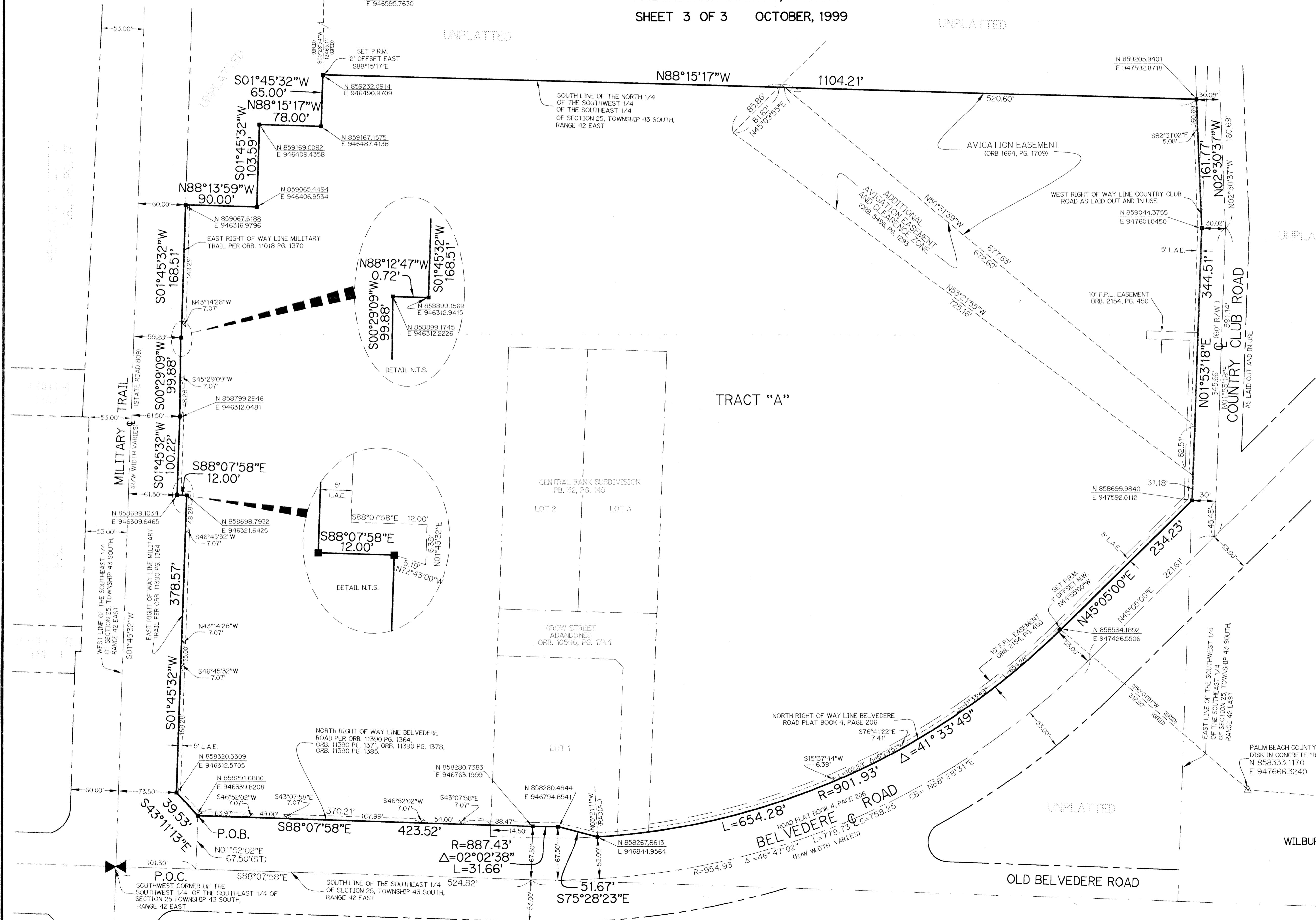


BMC PLAT

A MULTIPLE USE PLANNED DEVELOPMENT

LYING IN SECTION 25, TOWNSHIP 43 SOUTH, RANGE 42 EAST
AND BEING A REPLAT OF A PORTION OF CENTRAL BANK SUBDIVISION,
AS RECORDED IN PLAT BOOK 32, PAGE 145 OF THE PUBLIC RECORDS OF
PALM BEACH COUNTY, FLORIDA.

SHEET 3 OF 3 OCTOBER, 1999



- LEGEND:**
- - SET PERMANENT REFERENCE MONUMENT, LB #6674
 - △ - DELTA ANGLE
 - ⊕ - CENTERLINE
 - D.B. - DEED BOOK
 - L - ARC LENGTH
 - L.A.E. - LIMITED ACCESS EASEMENT
 - N.R. - NOT RADIAL
 - N.T.S. - NOT TO SCALE
 - ORB. - OFFICIAL RECORD BOOK
 - P.B. - PLAT BOOK
 - P.S. - PAGES
 - P.S.M. - PROFESSIONAL SURVEYOR AND MAPPER
 - R - RADIUS
 - R/W - RIGHT-OF-WAY
 - S.T. - SURVEY TIE
 - U.E. - UTILITY EASEMENT
 - C.B. - CHORD BEARING
 - C - CHORD LENGTH
 - P.O.B. - POINT OF BEGINNING
 - P.O.C. - POINT OF COMMENCEMENT
- NOTE:**
- COORDINATES SHOWN ARE GRID COORDINATES
 DATUM = NAD 83 (1990 ADJUSTMENT)
 ZONE = FLORIDA EAST ZONE
 LINEAR UNIT = U.S. SURVEY FEET
 COORDINATE SYSTEM 1983 STATE PLANE
 TRANSVERSE MERCATOR PROJECTION
 ALL DISTANCES ARE GROUND
 SCALE FACTOR = 1.0000380
 S. 88°07'58" E. (PLAT BEARING)
 S. 88°31'07" E. (GRID BEARING)
 BEARING ROTATION (PLAT TO GRID)
 00°23'09" COUNTER CLOCKWISE

NOTE:

COORDINATES SHOWN ARE GRID COORDINATES
 DATUM = NAD 83 (1990 ADJUSTMENT)
 ZONE = FLORIDA EAST ZONE
 LINEAR UNIT = U.S. SURVEY FEET
 COORDINATE SYSTEM 1983 STATE PLANE
 TRANSVERSE MERCATOR PROJECTION
 ALL DISTANCES ARE GROUND
 SCALE FACTOR = 1.0000380
 S. 88°07'58" E. (PLAT BEARING)
 S. 88°31'07" E. (GRID BEARING)
 BEARING ROTATION (PLAT TO GRID)
 00°23'09" COUNTER CLOCKWISE

PALM BEACH COUNTY BRASS
 DISK IN CONCRETE "RUNWAY II"
 N 858333.1170
 E 947666.3240

PALM BEACH COUNTY BRASS
 DISK IN CONCRETE "MOTOR POOL"
 N 858037.0030
 E 951504.3780

THIS INSTRUMENT PREPARED BY
 WILBUR F. DIVINE, P.S.M. 4190, STATE OF FLORIDA
 LAWSON, NOBLE AND WEBB, INC.
 ENGINEERS PLANNERS SURVEYORS
 420 COLUMBIA DRIVE, SUITE 110
 WEST PALM BEACH, FLORIDA 33409
 LB6674

PLAT # 164
 PLATTING # 1556
 ZONING RUM
 ZIP CODE 33417
 BUC